

Machine Specification	VT18
Travel	
X-Axis	450 mm (17.71")
Y-Axis	300 mm (13.77")
Z-Axis	14T : 360mm (14.17")
Spindle nose to table	180 mm (7.08")
Table	
Table size	500 mm x 350 mm (19.68 ~13.77")
Floor to table	850 mm (33.46")
Max. table loading capacity	150 kgs (330 Lbs)
T-slot (number x width x pitch)	3 x 18mm x 100mm (3 x 0.7" x 3.93")
Spindle center to column	417 mm (16.41")
Feed system	
Rapid traverse speed	X / Y / Z : 48 / 48 / 36 M/min
Feed motor (FANUC)	(FANUC)X / Y : β 4i-4000X / Z : β 8i-3000X
Ball screw diameter & pitch	X : 25 mm /12 mm (0.98/0.47") Y : 25 mm /12 mm (0.98/0.47") Z : 30 mm /12 mm (1.18/0.47")
Cutting feed rate	12 mm/min("/min)
Type of transmission	Direct Drive
Spindle	
Type of tool shank	BT 30 / DIN 30
Max. spindle speed	FANUC : 10000 / 15000 rpm (Option: CTS)
Spindle motor	FANUC : β 3-10000i / α T2-15000i rpm
Type of transmission	Direct Drive
ATC	
Tool storage capacity	14 T
ATC type	Turret type
Max. tool diameter	90 mm (3.54")
Without adjacent tool	150 mm (5.9")
Max. tool length	200 mm (7.87")
Max. tool weight	3 kg (6.61 Lbs)
Tool changing time (Tool to Tool)	1.8 sec
Tool changing time (Chip to Chip)	2.8 sec
Method of tool selection	Random selection bi-directional magazine rotation
Tool display	Yes
Special tool management	Yes
Coolant system	
Coolant tank size	200 L
Coolant capacity	150 L / min
Chip Flush capacity	150 L / min
Machine size	
Machine height	2145 mm (84.4")
Floor space	1500 x 2159 mm (59" x 85")
weight	2600 kgs (5320 Lbs)
Power source	
Electrical power supply	10 KVA / 3 PH , 220V50/60HZ
Compressed air supply	6.0 kgf/cm ² (85psi) (0.6MPa)
Controller	FANUC

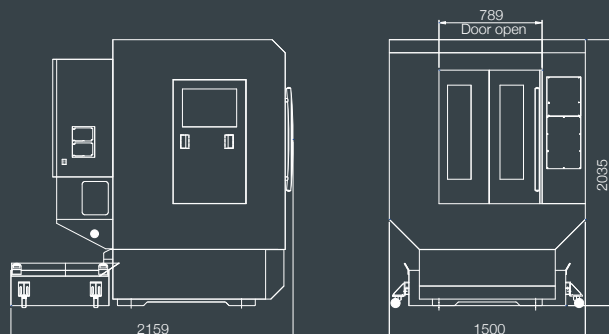
* Specifications may different according to option accessories and are subject to change without notice.

Edition/ A00

11070804 - MacSIS, TEL:04-24733326

Trust And Reliability
FIRST

LONG CHANG MACHINERY CO., LTD.
<http://www.first.com.tw>



Unit:mm

Trust And Reliability

FIRST



Roller Guide System

VT 18

DRILLING
& TAPPING
CENTER

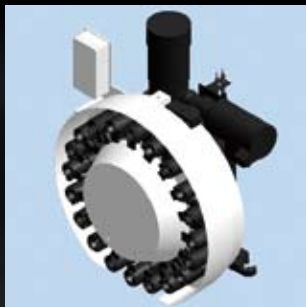
LONG CHANG MACHINERY CO., LTD.

ENCLOSED SPLASH GUARD



MAGAZINE

- 14 Tools turret type ATC

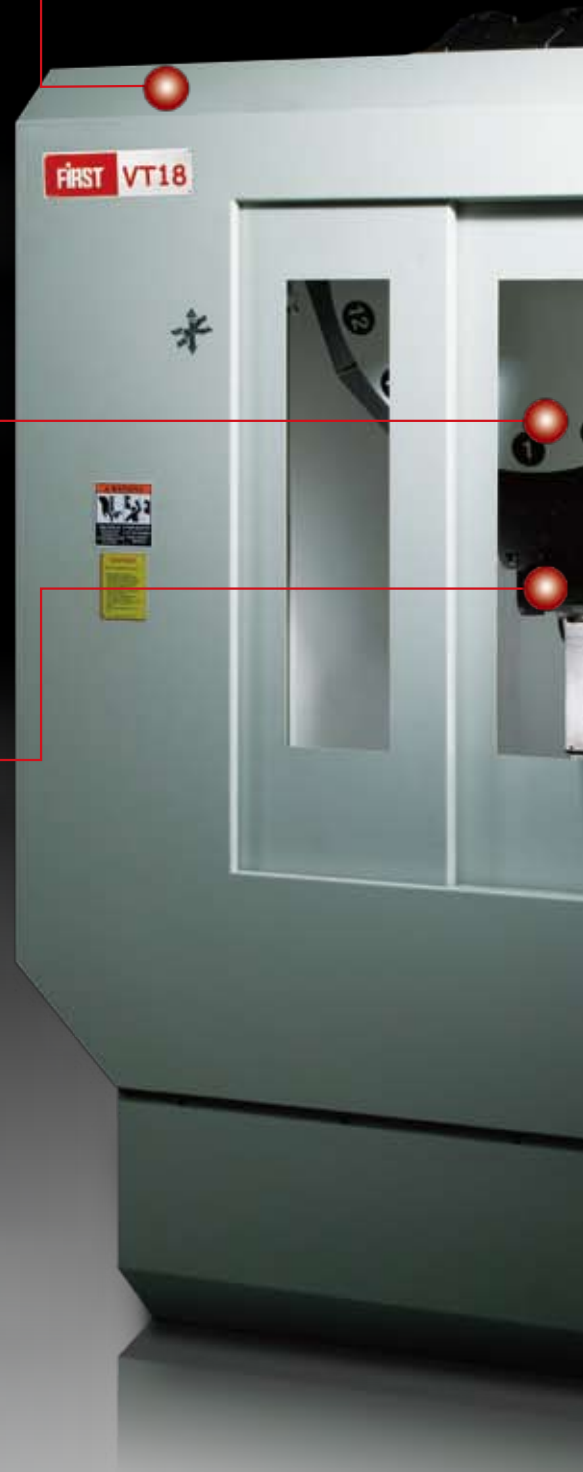


- 20 Tools arm type ATC (Option)



DIRECT DRIVE SPINDLE

- Easy for after service
- Low noise and low vibration
- Coolant Through Spindle
15,000 rpm(Option)



VT18



- Rigid tapping 4000RPM.
- Direct drive spindle for high speed machining, excellent accuracy and best performance of spindle motor.
- Optional arm type ATC with high efficiency of tool changing.
- Standard roller bearings linear guide ways offer stability while high-speed 3 axes movements.
- MEEHANITE casting structure absorbs vibration to maintain rigidity.

AUTOMATIC LUBRICATION UNIT

- Excellent lubrication to all blocks and ball screws



COOLANT TANK: 200L

